

Figure 4—Windows Found New Hardware Wizard

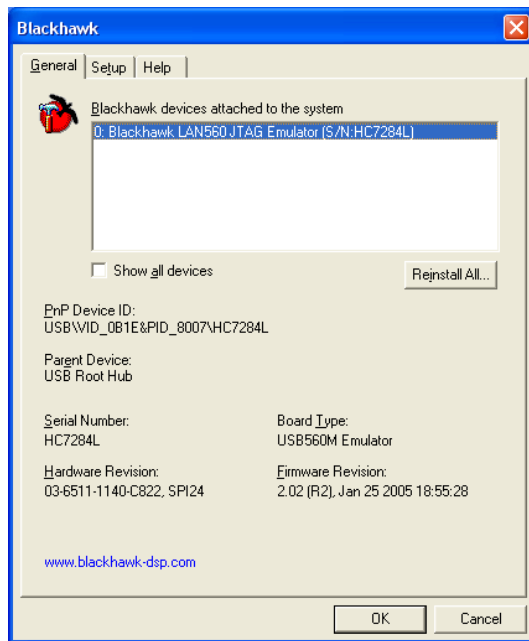


Figure 5—Blackhawk Control Panel

# QUICK START GUIDE

# Blackhawk™ LAN560 JTAG Emulator (LAN560)

## ▶ NETWORK ADMINISTRATION ◀

This network administration portion of the LAN560 Quick Start Guide series is intended to show how to configure the LAN560 Emulator for operation on your local area network, should the default TCP/IP settings not be suitable.

For installation and debugging with code Composer Studio please refer to the other USB and Ethernet Quick Start Guides included with the LAN560 JTAG Emulator.

### Inventory of Items Included

1. Blackhawk LAN560 JTAG Emulator POD (LAN560) and 12 inch JTAG cable.
2. High-Speed USB 2.0 Compliant Cable
3. Ethernet RJ45 Patch Cable
4. 5 Volt DC power supply
5. AC power cord (s)
6. 20-pin cTI JTAG cable.
7. 20e\_cTI-14t\_TI Pin Converter
8. 20e\_cTI-20t\_ARM Pin Converter
9. Installation CD
10. Warranty and Product Registration Cards.
11. Quick Start Guide.

### Other Items Required

1. Target Board System—a self-powered board with a TI DSP and compatible JTAG header connection conforming to IEEE 1149.1 Standard.
2. Copy of Code Composer Studio Version 2.2† or later.

### Installation Requirements

- PC or Notebook computer with one free USB v1.1 or v2.0 port for USB debug or LAN560 administration and/or free Ethernet port for LAN debug†.
- Windows® 2000 or XP/Vista Operating System
- Texas Instruments Code Composer Studio Version 2.2 or later.
- CD-ROM Drive.

† Ethernet connections to a local area network from the LAN560's Ethernet port is made using a standard RJ45 patch cable (supplied). For direct connection (PC to LAN560) an RJ45 cross-over cable is required (not supplied). LAN560 administration of TCP/IP address and subnet mask is done via USB port on the emulator.

### IMPORTANT ENVIRONMENTAL CONSIDERATIONS

This equipment is designed to be operated under the following environmental conditions:

Temperature between 0°C –55°C.  
Relative Humidity of 20% - 70% non-condensing.

Operation of the unit outside of the above range may affect structural and mechanical integrity and cause permanent damage.

Caution is necessary to minimize ESD (Electro-static Discharge) which can damage electronic components. Use in a controlled environment where ESD materials and practices are employed is highly recommended.

# 1 Network Administration

This section describes how to configure the LAN560 for operation on your network, should the default IP and Subnet Mask not be suitable.

This portion can be completed by the network administrator without having to install CCStudio. Install the Blackhawk Drivers for CCStudio v3.1 or later to access the configuration files and uninstall when done.

1. Insert the LAN560 Emulation Driver CDROM that shipped with the unit into the computer's CDROM drive.
2. If you do not plan to use the LAN560 on this computer, you can uninstall the Blackhawk drivers using the Windows Add/Remove Programs function.
3. Make sure the LAN560 is powered using the 5 volt power supply that shipped with the unit and plugged into the same AC circuit as the PC.
4. Connect the USB cable to the emulator and then to the computer. This will start the standard Windows "Found New Hardware" wizard (see Figure 4).
5. Windows may automatically locate the files, but you may have to specify the location where you installed the files during step 1 (i.e. \CCStudio\_v3.3\Blackhawk\Drivers.1\LAN). Then Windows will then find, copy and install the files needed to access the LAN560 via USB interface.
6. Once completed, the Blackhawk Control Panel and Windows Device Manager will list the device. The Blackhawk Control Panel (see figure 5) can be activated from its icon, located in the Windows Control Panel.
7. You can now run the LAN560 Ethernet configuration utility, bhethcfg.exe, by double-clicking the file (located under \CCStudio\_v3.3\Blackhawk\Drivers.1\LAN). The utility will display a dialog box (see figure 1) with standard Windows TCP/IP controls. It will populate the dialog with the current LAN560 settings.
8. To change these settings, simply edit the IP Address and Subnet Mask fields specifying your desired values. Once correct, click the Change button. When the Change button is selected the control will send the values to the emulator and upon completion, will display an acknowledgement dialog (see Figure 3) indicating that the values have been stored in the emulator.
9. You can now disconnect the USB cable and connect the emulator to your local area network via RJ45 connector and CAT5 cable (provided).
10. To activate the new network values, power must be recycled on the emulator. For access and installation of the LAN560 on your LAN from a client PC running Code Composer Studio, please refer to the Quick Start Guide on Ethernet Installation also included with the product.



Figure 1—LAN,USB & Power Endplate

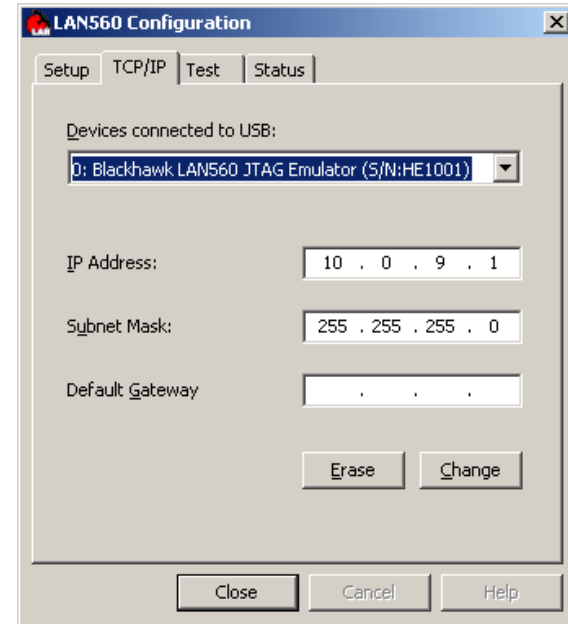


Figure 2—Blackhawk LAN560 Configuration Utility (bhethcfg.exe)

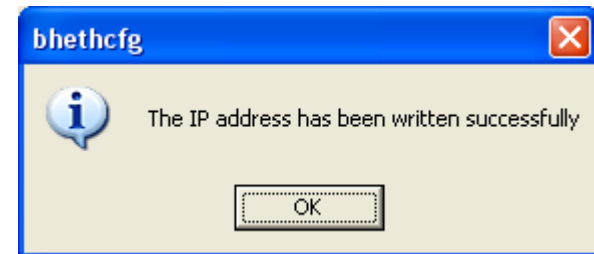


Figure 3—LAN560 IP Changes Acknowledgment Dialog

## Default Ethernet Settings

- **TCP/IP Address:** 10.0.9.1
- **Subnet Mask:** 255.255.255.0
- **MAC Address:** 00-0F-D2-0#-##-##

(where 0#-##-## are taken from the 4 digits in the LAN560's serial number. For example, if the LAN560's S/N is HG13789, the unit's MAC address will be 00-0F-D2-01-37-89.